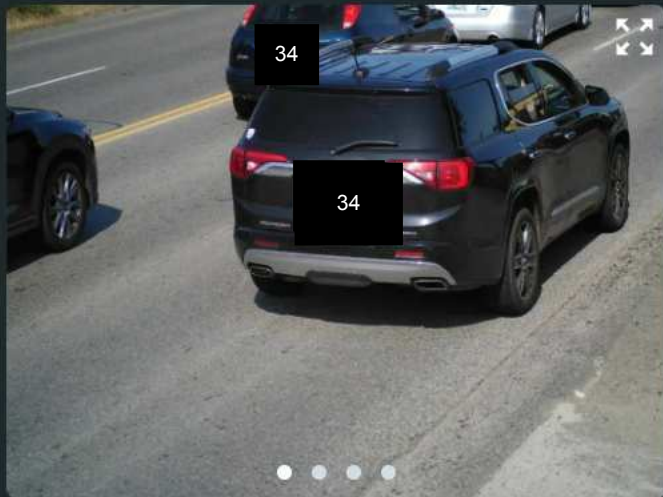




6/2/2025

16:26:18 PDT



34

WA

34



[View More Details](#)

Location [#01 2520 112th St S @ 26th Ave S - EB](#)



6/2/2025

16:25:57 PDT



34

WA

34



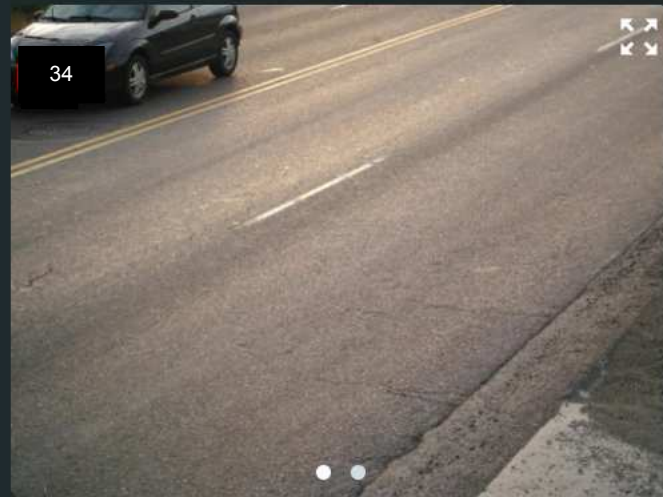
[View More Details](#)

Location [#01 2520 112th St S @ 26th Ave S - EB](#)



6/2/2025

06:28:25 PDT



34

WA

34



[View More Details](#)

Location [#01 2520 112th St S @ 26th Ave S - EB](#)

Redaction Log

Reason	Page (# of occurrences)	Description
33	1 (9)	RCW 42.56.070 ("other statute") and RCW 46.63.220 (images are "for the exclusive use of authorized city or county employees ... in the discharge of duties" and are "not open to the public"); and

Redaction Log

Reason	Page (# of occurrences)	Description
34	1 (11)	Records "pertaining to a vehicle license plate" that "may reveal the identity of an individual" are exempt from disclosure under the PRA. RCW 42.56.230. RCW 46.22.010 and WAC 308-10-075.